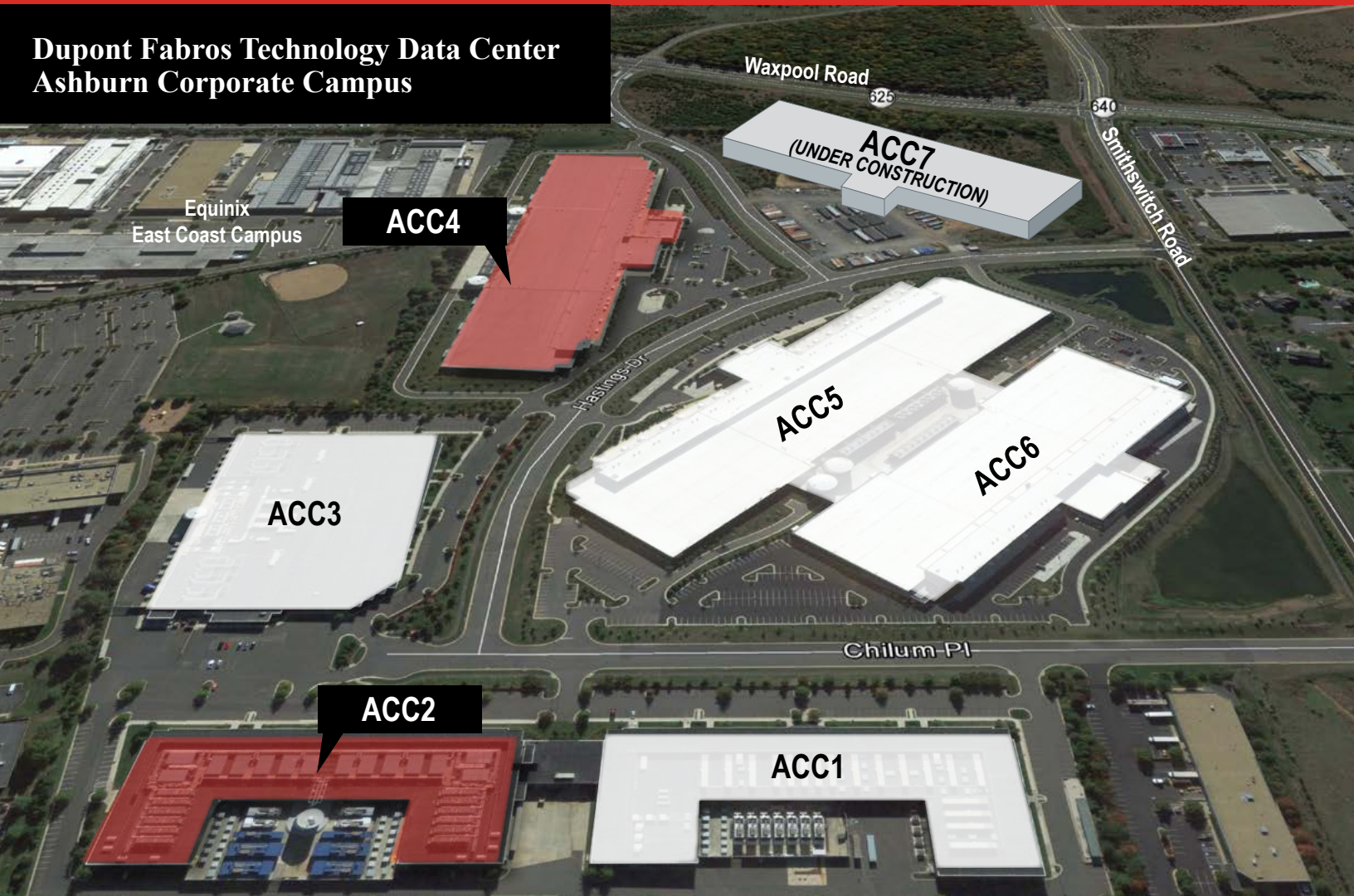


**Dupont Fabros Technology Data Center  
Ashburn Corporate Campus**



# YAHOO! DATA CENTERS

*24 MW Sublease Available Immediately*

**Offering Sublease Rates Significantly Below Market**



**ACC2 - 44490 Chilum Place, Ashburn, VA**



**ACC4 - 44480 Hastings Drive, Ashburn, VA**



**JONES LANG  
LASALLE**

*Real value in a changing world*

**Chris Sumter**  
Executive Vice President  
Chris.Sumter@am.jll.com  
+1 650 354 3346  
+1 925 786 8722 (cell)

**Allen Tucker**  
Managing Director  
allen.tucker@am.jll.com  
+1 703 891 8396  
+1 703 622 5620 (cell)

## ACC2 DATA CENTER HIGHLIGHTS

- Raised floor data center space available: 39,200 s.f. (entire building)
  - Two (2) contiguous computer rooms at 19,600 s.f. each
- Total IT power available: 10,400 kW / 10.4 MW
  - Each contiguous computer room has 5,200 kW / 5.2 MW

## BUILDING SPECS

### UPS SYSTEMS

Description	Rotary power systems
Redundancy	N+2

### GENERATORS

Description	Four (4) 2 MW Engine Generators for essential loads (diesel rotary units are for critical loads)
Redundancy	N+2

### ON-SITE FUEL CAPACITY

Storage tanks	Six (6) 6,000-gallon belly tanks
Number of hours	48 hours minimum

### HEAT REJECTION SYSTEMS (HVAC)

Description	12 400-ton rooftop cooled chillers with 30% Propylene Glycol solution
CRAC units	18 rooftop air handling units
Redundancy	N+2

### FIRE PROTECTION

Description	Conventional smoke detector and laser-based incipient smoke detection systems and double interlocked pre-action sprinkler system
-------------	--

### SECURITY

Building and perimeter	Ballistic glass enclosed security check-in, front window areas and loading dock
Security guards	Staffed 24/7
Access control	Electronic security features with card access and dual authentication with biometric readers
CCTV	24/7 surveillance of the interior / exterior of the facility

### PDU's

Description	Dual input PDUs (20 per room) feeding remote power panels
-------------	---

### STAGING / TENANT OFFICE SPACE

Office	Office, storage, and staging space
--------	------------------------------------

### COMMUNICATIONS

POE	Two (2) separate network Points of Entry (POE) with diverse underground duct banks providing multiple entry points into the facility
Conduits	Dedicated underground conduits to each computer room from multiple and diverse POEs
Multiple carriers	Available
Meet-me-room	Available

## ACC4 DATA CENTER HIGHLIGHTS

- Raised floor data center space available: 64,200 s.f.
  - Six (6) contiguous computer rooms at 10,700 s.f. each
- Total IT power available: 13,650 kW / 13.65 MW
  - Each contiguous computer room has 2,275 kW / 2.275 MW

## BUILDING SPECS

### UPS SYSTEMS

Description	Rotary power systems
Redundancy	N+2

### GENERATORS

Description	Diesel-powered engine generators
Redundancy	N+2

### ON-SITE FUEL CAPACITY

Storage tanks	Four (4) 50,000 gallon underground diesel storage tanks
Number of hours	48 hours minimum

### HEAT REJECTION SYSTEMS (HVAC)

Description	Centrifugal chillers with cooling towers
CRAC units	26 per room
Redundancy	N+2

### FIRE PROTECTION

Description	Conventional smoke detector and laser-based incipient smoke detection systems and double interlocked pre-action sprinkler system
-------------	--

### SECURITY

Building and perimeter	Ballistic glass enclosed security check-in, front window areas and loading dock
Security guards	Staffed 24/7
Access control	Electronic security features with card access and dual authentication with biometric readers
CCTV	24/7 surveillance of the interior / exterior of the facility

### PDU's

Description	Dual input 300 kVA PDU's - 600 volt primary, 10 per room
-------------	--

### STAGING / TENANT OFFICE SPACE

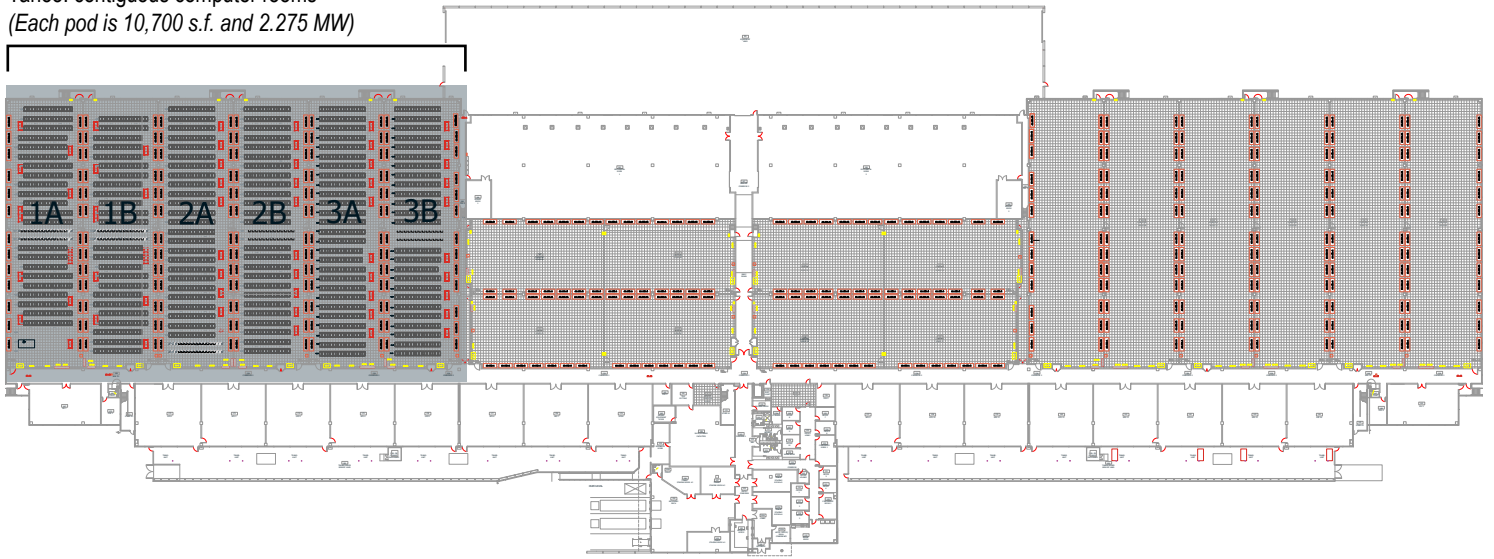
Office	Office, storage, and staging space
--------	------------------------------------

### COMMUNICATIONS

POE	Four (4) separate network Points of Entry (POE) with diverse underground duct banks providing multiple entry points in to the facility
Conduits	Dedicated underground conduits to each computer room from multiple and diverse POEs
Multiple carriers	Available
Meet-me-room	Available



Yahoo! contiguous computer rooms  
(Each pod is 10,700 s.f. and 2.275 MW)



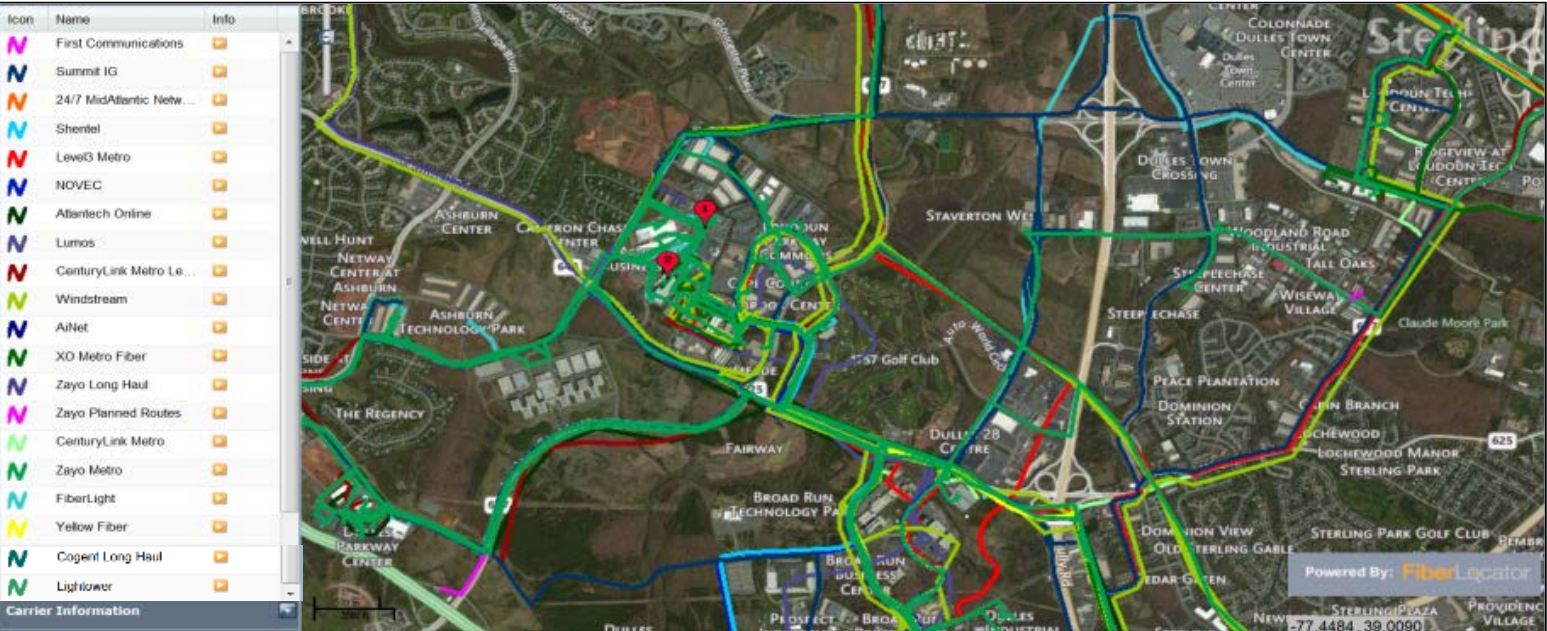
ACC4 floor plan



# YAHOO! DATA CENTERS SUBLEASE CONNECTIVITY OPTIONS



NOTE: ATT & Verizon are not represented due to their presence in most locations



NOTE: ATT & Verizon are not represented due to their presence in most locations

# YAHOO! DATA CENTERS

## *Sublease highlights*

- Flexible terms
- Offering sublease rates significantly below market
- Unparalleled access of speed-to-market
- Excellent access to Equinix East Coast Campus and low latency to major U.S. and global markets
- Buildings each served by 34.5 kV dedicated feed
- Power rates are \$0.055 / kW hr
- All critical infrastructure (mechanical and electrical) designed and maintained at N+2 redundancy
- High Resistance Grounding System (HRG)
- Dry pipe pre-action sprinkler and VESDA early-warning smoke detection systems throughout all raised-floor spaces
- Access to many fiber optic network operations
- On-site multi-layered security

**Chris Sumter**

Executive Vice President  
2300 Geng Road, Suite 100  
Palo Alto, CA 94303  
chris.sumter@am.jll.com  
+1 650 354 3346 | +1 925 786 8722 (cell)

**Allen Tucker**

Managing Director  
1850 Towers Crescent Plaza, Suite 300  
Tysons, VA 22182  
allen.tucker@am.jll.com  
+1 703 891 8396 | +1 703 622 5620 (cell)



JONES LANG  
LASALLE®

*Real value in a changing world*